



  
Lutheran  
SeniorLife  
St. John  
Community

*Committed to  
continuing  
care.*

[LutheranSeniorLife.org](http://LutheranSeniorLife.org)

## OVERVIEW



*Helping seniors thrive for more than 100 years.*

**Lutheran  
SeniorLife**  
St. John  
Community

# ST. JOHN COMMUNITY

*One of western Pennsylvania's most desirable continuing care communities.*

*Committed to continuing care.*

**Overbrook Pointe and  
The Residence at St. John**  
*Residential Living*

**Edgewood Grove**  
*Personal Care*

**RoseCrest**  
*Assisted Living  
with Memory Support*

**St. John Specialty Care**  
*Skilled Nursing and  
Rehabilitation*

For more than 100 years, St. John Community has helped seniors thrive spiritually, emotionally, intellectually and physically. Through our vibrant continuing care community, our goal is to help you live life to the fullest—with the respect, love and the compassion you deserve.

Explore what this vibrant continuing care community has to offer – engaging activities, exceptional services and amenities, all on a relaxing and beautiful campus.

The St. John Community is nestled within the beautiful countryside of the Borough of Mars. This charming campus offers all levels of care and living options, including:

- Overbrook Pointe, residential living
- The Residence at St. John, residential living
- Edgewood Grove, personal care
- RoseCrest Assisted Living with Memory Support
- St. John Specialty Care, skilled nursing and rehabilitation

You will find endless opportunities for learning, wellness, fun, and friendship — plus the peace of mind knowing that the care you need is right around the corner, if and when you need it.

- See how effortless it is for you to live a vibrant and active lifestyle, surrounded by cultural, spiritual, social, and recreational opportunities.
- Be pleasantly surprised how well you will enjoy the open spaces, services and amenities.
- Experience peace of mind knowing that accessible health care services are nearby when you need them.

Lutheran SeniorLife St. John Community is one of western Pennsylvania's longest serving continuing care communities—a carefree place where you can live an **Abundant Life**®.

Residential Living



Personal Care



Assisted Living



Skilled Nursing



**724-625-1571**

[www.LutheranSeniorLife.org](http://www.LutheranSeniorLife.org)

## RESIDENTIAL LIVING



*Redefine what it means to live an independent lifestyle while pursuing your passions.*

# Overbrook Pointe

*Define your life independently and Live an Abundant Life®*

Is it time? Time for you to live a hassle-free lifestyle – one without mowing your yard, cooking every meal and cleaning your house? Are you looking for more “me time,” where you can prop up your feet and listen to music, read a book, or socialize with other like-minded people?

No matter how you may want to spend your days, residential living at Overbrook Pointe provides you with the opportunity to redefine what it means to live an independent lifestyle while pursuing your passions.

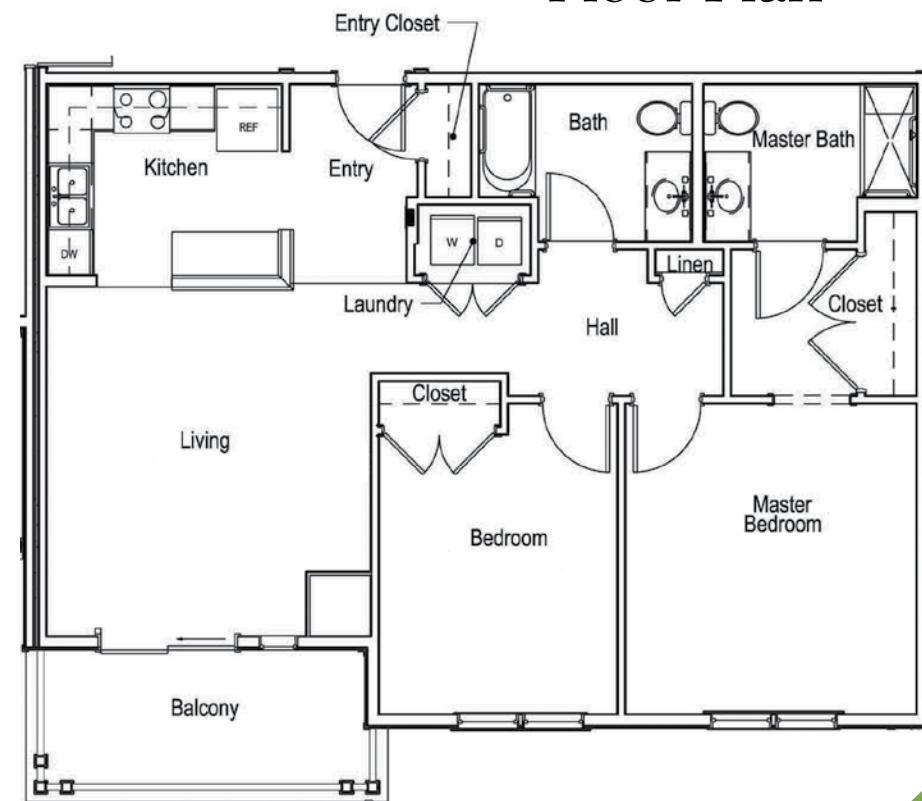
By choosing Overbrook Pointe, you will have – at your fingertips – access to bistro-style dining, fitness room, indoor lounges, as well as a veranda with a gazebo, tranquil waterfalls, and an outdoor patio for entertaining guests – not to mention, local restaurants, pharmacies, and places of worship.

With major highways nearby, you will have a choice of the cultural and sporting events of the City of Pittsburgh or in contrast, the quiet, and serenity of the rural countryside of Butler County. Either option provides access to diverse restaurants, coffee shops and a variety of recreational activities, parks, museums, historic sites, farmers markets and more.

724-625-1571

[www.LutheranSeniorLife.org](http://www.LutheranSeniorLife.org)

## Two-Bedroom Floor Plan



Overbrook Pointe offers a variety of apartment styles including one- and two-bedroom plans. All apartments are fully equipped with kitchen, laundry, walk-in showers, generous storage spaces, patio or balcony.

Define your life independently and *Live an Abundant Life®*.

## RESIDENTIAL LIVING



*Intentionally  
simplify your  
life and enjoy  
the freedom to  
do more of the  
things you love.*

# The Residence at St. John

*New, quaint and  
cozy residential  
living apartments  
within a continuing  
care community.*

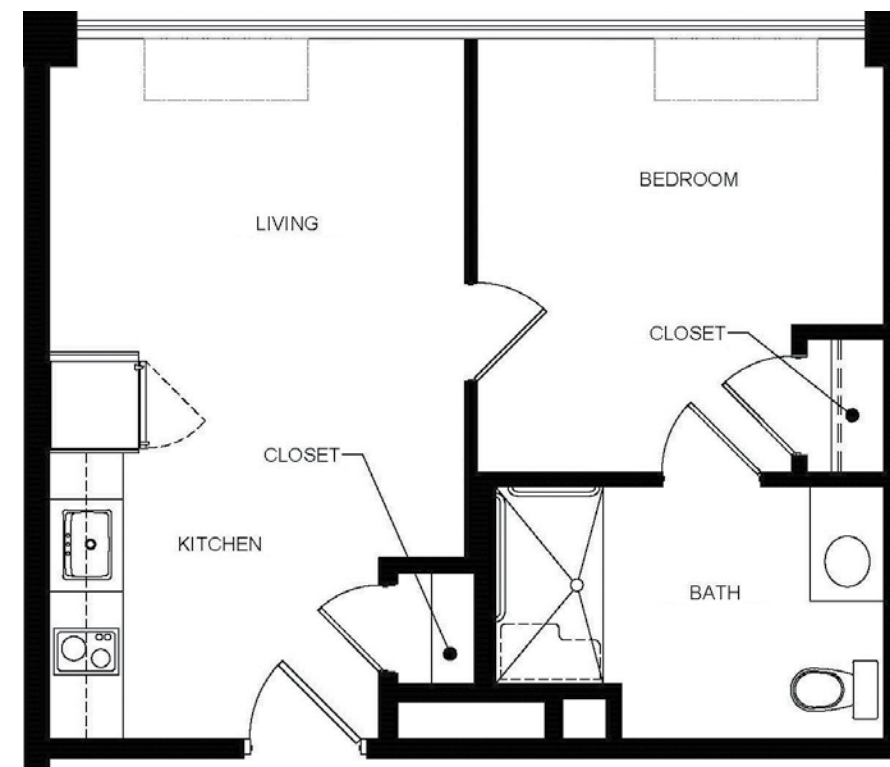
The Residence at St. John redefines residential living within a continuing care community that provides an affordable option to live the lifestyle you dreamed of.

The Residence at St. John offers quaint one-bedroom apartments with kitchen, laundry, walk-in showers, and storage space. By choosing The Residence at St. John, you will enjoy the freedom to do more of the things you love without the hassle of daily household chores.

These charming apartments also include well-lit, common areas, as well as chef-prepared meals served in a relaxed dining atmosphere. The Residence also offers a library, fitness area, open lounges, and an outdoor patio providing ample opportunity for socialization. The apartments are conveniently located a short distance from places of worship, restaurants, banks, and pharmacies, as well as quaint shops and boutiques.

You will also enjoy the peace of mind knowing that the community has been designed to help you live a carefree lifestyle with access to additional services, if and when you need it.

## One-Bedroom Floor Plan



Intentionally simplify your life with an apartment designed to support a lifestyle that encourages you to *Live an Abundant Life®*.

724-625-1571  
[www.LutheranSeniorLife.org](http://www.LutheranSeniorLife.org)

## PERSONAL CARE



*Personalized care, support and security in a homelike setting.*

## Edgewood Grove

*Personal care neighborhood with 24-hour supervision and assistance.*

Edgewood Grove is a quaint personal care neighborhood within the St. John Community, offering a home-like setting where you can dine with friends, and take part in activities in a supportive and secure setting.

These affordable accommodations also provide residents with one-on-one personalized care in a home designed with their safety in mind. The caring staff works diligently to provide assistance to meet the individual needs of the residents.

Residents of Edgewood Grove also have access to an outdoor patio surrounded by a beautiful and peaceful wooded setting. Residents receive three nutritious meals a day with snacks, as well as, weekly housekeeping services, laundry and transportation to appointments.

Edgewood Grove offers 24-hour supervision and assistance along with daily social and group activities. Our compassionate and committed caregivers are dedicated to helping you regain your independence while providing you the support that you need to live an *Abundant Life*®.

## Compassionate and Committed Care



724-625-1571

[www.LutheranSeniorLife.org](http://www.LutheranSeniorLife.org)

## ASSISTED LIVING



*Engaging residents and providing life-supporting services in a community that cares.*

## RoseCrest

*Specialized care for older adults with memory loss in a caring, thoughtful and consistent environment.*

RoseCrest provides specialized care for older adults with Alzheimer's disease or other forms of dementia in a caring, thoughtful and consistent environment for our residents.

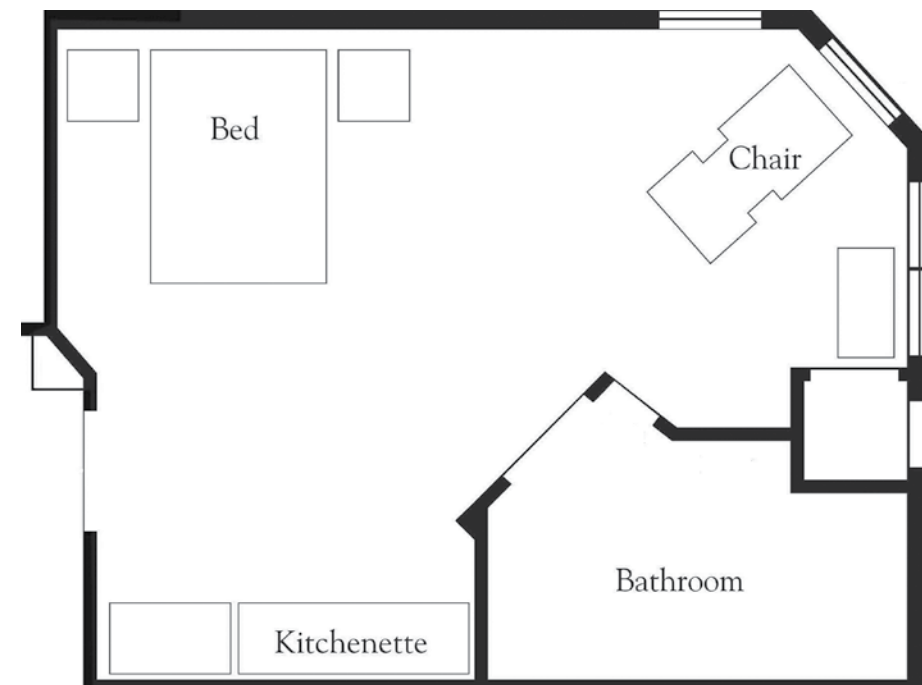
Our program features a person-centered approach aimed to ensure that our residents feel welcome, and secure in a warm and inviting homelike atmosphere. To achieve this goal, we surround your loved one with familiar people on a daily basis who know them and help them enjoy life, by generating feelings of belonging and purpose.

Our dedicated staff engage our residents daily providing one-on-one interactions, as well as group activities and entertainment. Residents also have access to a secure outdoor courtyard equipped with a walking path and garden area where they grow flowers and vegetables.

Residents' suites are equipped with a private bath and an armoire to easily identify clothing. An executive chef and dietician prepare three meals a day to meet the residents' preferences and dietary needs.

Our trained staff purposefully engage residents daily with "mind stretch activities," where residents talk with staff about their lives. These types of conversations help staff

## Comfort and Security



understand how well someone is doing—providing opportunity to adjust residents' care as needed.

No matter what stage of memory support needed, RoseCrest has the program, facilities and knowledgeable staff to meaningfully engage residents in a community that cares.

724-625-1571

[www.LutheranSeniorLife.org](http://www.LutheranSeniorLife.org)

SKILLED  
NURSING



*Providing  
residents with the  
most enriching  
and fulfilling  
life possible –  
Abundant Life®.*

Our work is  
a commitment.

## St. John Specialty Care Center

Sometimes all we need in life is a little help. The St. John Specialty Care Center has been helping people regain their independence in a faith-based setting for over 100 years. Whether you are recovering from surgery, injury or illness, our goal is to help you transition from the hospital back to your home and your community.

Through an individualized care plan, our highly trained staff of physical, occupational and speech therapists will work with you to achieve the highest level of mobility, function and independence possible. Each form of rehabilitation serves a unique purpose in helping a person reach full recovery, but all share the ultimate goal of helping the patient return to a healthy and active lifestyle.

The goal of physical therapy is to improve mobility, balance and strength through coordinated exercises ensuring the safety of every patient. In occupational therapy, a range of activities helps to achieve a level of independence in the performance of daily household and personal care tasks. If swallowing or speech is affected, speech therapy will help you learn strategies for safe swallowing and effective communication.

For those with dementia or Alzheimer's disease, our memory support neighborhood provides care in a safe and secure environment for those who can no longer live alone and may be putting their physical safety at risk. Our Montessori methods engage the senses to rediscover the world around them through activities that embrace role, routine and improve self-esteem. The focus is on re-discovering and supporting the person behind the dementia.

At St. John Community, our work is more than a job; it is a commitment to our ministry to provide residents with the most enriching and fulfilling life possible to live an **Abundant Life®**.

*Skilled nursing,  
rehabilitation services  
and memory support  
in a caring and safe  
environment.*

724-625-1571

[www.LutheranSeniorLife.org](http://www.LutheranSeniorLife.org)

## MISSION



Striving to  
foster and grow  
**AbundantLife®**  
in all that we do.

We are here  
to serve.

## Live an Abundant Life®...

### What does it mean?

Lutheran SeniorLife strives to foster and grow **Abundant Life®**.

*Abundant Life®* is unique to each person in what brings joy, enrichment, hope and love to life. Regardless of one's situation in life, physical abilities or limitations, to live an *Abundant Life®* means that each person can live each day with purpose, meaningful activity and a peaceful heart surrounded by people who value and appreciate one another. *Abundant Life®* includes elements of opportunity, acceptance, respect, compassion, empowerment and dignity.

In the spirit of our faith-based mission, every member of the Lutheran SeniorLife community is dedicated to ensuring an environment that provides *Abundant Life®* – in all that we do. *Abundant Life®* is taken from the Bible, John 10: 10, where Jesus tells us that He came in order to give us life and to give it abundantly.

“I came to give life and give it abundantly.”  
– JOHN 10:10

Lutheran SeniorLife is aware that what brings abundance to the life of any individual depends on each person. The key to fulfilling our mission is to know each person we serve fully so we can deliver an **Abundant Life®** for everyone.

Compassion  
Acceptance  
Respect  
Empowerment  
Dignity

  
**Lutheran  
SeniorLife**  
St. John  
Community

724-625-1571  
[www.LutheranSeniorLife.org](http://www.LutheranSeniorLife.org)



# Live an Abundant Life<sup>®</sup>

  
Lutheran  
SeniorLife  

---

St. John  
Community

724-625-1571

[www.LutheranSeniorLife.org](http://www.LutheranSeniorLife.org)

500 Wittenberg Way • Mars, PA 16046



---

Lutheran SeniorLife does not discriminate on the basis of race, color, national origin (including limited English proficiency and primary language), sex (including pregnancy, sexual orientation, gender identity, and sex characteristics), age, or disability.

ATTENTION: If you do not speak or understand English, language assistance services, free of charge, are available to you. Call (724) 742-2295 (TTY Relay Services 711)

ATENCIÓN: si habla español, tiene a su disposición servicios gratuitos de asistencia lingüística. Llame al (724) 742-2295 (TTY 711)

ATTENZIONE: In caso la lingua parlata sia l'italiano, sono disponibili servizi di assistenza linguistica gratuiti. Chiamare il numero (724) 742-2295 (TTY 711)